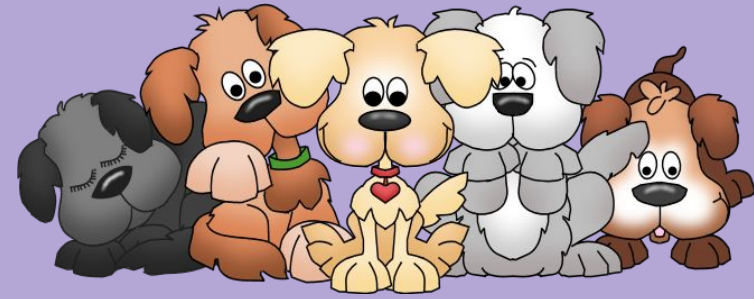




January 15th - 19th



MATH

- ★ We will continue multi digit division and checking with the inverse.
- ★ We will finish Factors and Multiples.

Vocabulary to Know:

- 1.dividend
- 2.divisor
- 3.quotient

Google Apps

- ★ We will review FiD procedures for Google.
- ★ We will work on enhancing a Google Doc with snip it, inserting images, etc.

IMPORTANT REMINDERS:


- ★ Please continue to check the Daily Folder and Planner for important information !
- ★ NO SCHOOL - Teacher In-Service: Monday, January 15th 🖍️

Mrs. Wilson's LESSON PLANS

Week of January 15th - 19th

Lesson Plans are Subject to Change



	MONDAY January 15th	TUESDAY January 16th 6 C	WEDNESDAY January 17th 1 A	THURSDAY January 18th 2 B	FRIDAY January 19th 3 C
MATH	<p>Act 80 Day</p> <p>NO SCHOOL!</p>	<p>O:TSWBAT -Divide multi digit numbers -Define vocabulary related to division A: ★ Mad Minutes ★ POTD ★ Division Vocab ★ Division Practice without remainders E: student responses</p>	<p>O:TSWBAT -Divide multi digit numbers with no remainders A: ★ Mad Minutes ★ POTD ★ Division Practice without remainders E: student responses</p>	<p>O:TSWBAT -Divide multi digit numbers A: ★ Mad Minutes ★ POTD ★ Division Practice without remainders E: student responses</p>	<p>O:TSWBAT -Divide multi digit numbers -Define vocabulary related to division A: ★ Mad Minutes ★ POTD ★ Division Vocab ★ Division Practice without remainders E: student responses</p>
Extra/Google Apps	 <p>O:TSWBAT -gain understanding of Google Apps. -Identify Multiples and Factors. A: ★ Factors & Multiples Study Guide ★ FID Google ★ Get to Know Docs E: student responses</p>	<p>O:TSWBAT -gain understanding of Google Apps. -Identify Multiples and Factors. A: ★ Factors & Multiples Study Guide ★ FID Google ★ Get to Know Docs E: student responses</p>	<p>O:TSWBAT -gain understanding of Google Apps. -Identify Multiples and Factors. A: ★ Factors & Multiples Study Guide ★ FID Google ★ Get to Know Docs E: student responses</p>	<p>O:TSWBAT -gain understanding of Google Apps. -Identify Multiples and Factors. A: ★ Factors & Multiples Study Guide ★ FID Google ★ Get to Know Docs E: student responses</p>	<p>O:TSWBAT -gain understanding of Google Apps. -Identify Multiples and Factors. A: ★ Factors & Multiples Quiz ★ Get to Know Docs E: student responses</p>

*Lesson Plans meet requirements of the Rockwood Area School District Curriculum & PA State Standards for 4th Grade.

*Accommodations & Modifications included but not limited to: follow IEPs & GIEPS, differentiated instruction, preferential seating, opportunities for intervention or enrichment, & challenge activities at teacher's discretion.